

The NOSTALGIA

— A wistful sensuous yearning for irrecoverable memories —



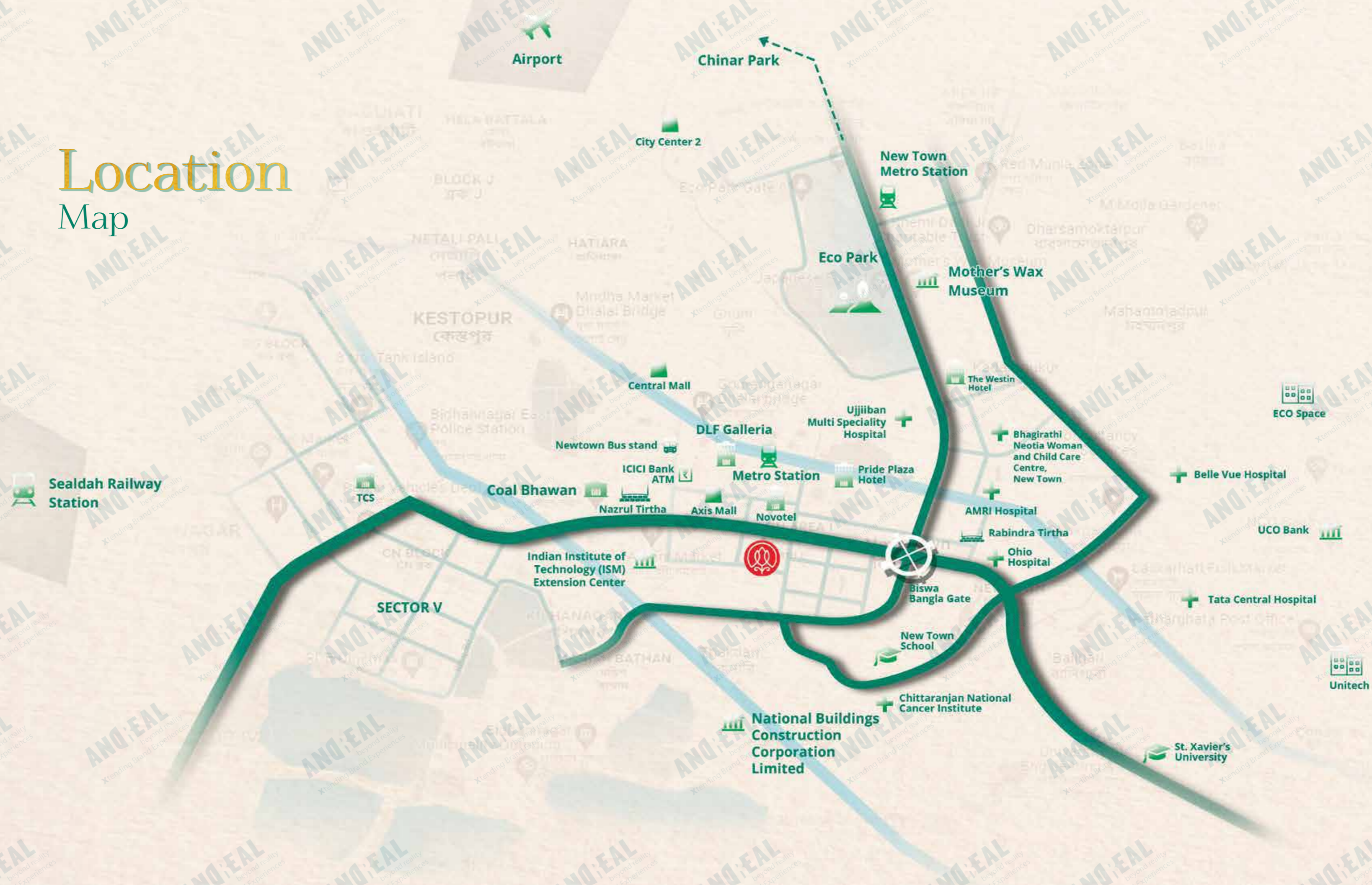
SUN ASTICUS
A group of companies

Live. Work. Shop. Relax.

Imagine a day in your life. You wake up, drink coffee, work, head for meetings, shop for essentials, grab a drink, have dinner and go to sleep. Now, re-imagine this day when you are not at home. A day when you will have to get all these done within 24 hours. It needn't be as tiring as it sounds, not with Nostalgia around.

Kolkata's newest commercial address Nostalgia is your one-stop destination for all work and leisure needs. From spacious commercial spaces, a food court, themed hotels, restaurants and pubs to conference rooms - this G+7 building has everything you could ever want.

Location Map



Nearest Landmarks

| | |
|--|----------|
| • Novotel | (220 m) |
| • Pride Plaza Hotel | (550 m) |
| • The Westin Hotel | (3 km) |
| • New Town School | (3 km) |
| • Tata Central Hospital | (2 km) |
| • Ohio Hospital | (2 km) |
| • Chittaranjan National Cancer Institute | (2.1 km) |
| • Belle Vue Hospital | (4.2 km) |
| • St. Xavier's University | (4 km) |
| • Metro Station | (250 m) |
| • Biswa Bangla Gate | (1 km) |
| • Sector V | (3.5 km) |
| • Eco Park | (4 km) |
| • Sealdah Railway Station | (11 km) |
| • Newtown Bus stand | (950 m) |
| • Airport | (12 km) |
| • Central mall | (1 km) |
| • City Center 2 | (6 km) |
| • Unitech | (2 km) |
| • TCS | (3 km) |
| • ECO Space | (4 km) |
| • Nazrul Tirtha | (1.5 km) |
| • Rabindra Tirtha | (1.6 km) |

Stay connected with the city

Standing tall over the cityscape of New Town, Nostalgia couldn't have a better address, particularly for those flying in and out of the city. Bang opposite Axis Mall (the fun hub of New Town) and close to Eco Park it is poised to be one of the most popular landmarks in the city.



Note: "All images are Virtual view, these are not be replicated in the project"



Note: "All images are Virtual view, these are not be replicated in the project"

No need to step out unless you fancy it

When you are outside, nothing comforts you more than the feeling of being home,

Nostalgia, a G+7 building is a place that humours your every mood, whim and fancy. And how? Well, this first-ever commercial property in new town has a pub, bar-cum restaurant, thematic hotels, rooftop lounge, banquet hall and corporate auditoriums. Be it business meetings or bachelorette parties, this stylish property has a space for all.



Note: "All images are Virtual view, these are not be replicated in the project"



Get high, underground

Brimming with shopping malls, corporate offices and residential complexes, the gastropub at the Nostalgia is just the swig New Town needs!

The first floor is dedicated to a restaurant cum pub where guests can unwind after a long day with a relaxing drink.



A trip down the memory lane, in the making

Weddings, birthday parties, social events... Nostalgia will make you nostalgic about every memory made here. The spacious banquet hall with a seating capacity of 150 guests, 24X7 air-conditioning, projectors, microphones and multiple screens has all the makings of a perfect party zone.



Palate perfect

An ode to the incredible flavours of India, and other known and unknown cuisines from across the globe this multi-cuisine fine dining restaurant with an a la carte menu cooks up gastronomic delights.



An office away from office

Touch down for a quick meeting at the Nostalgia. Agreed the picturesque setting will distract you but the smartly designed spaces for conferences and corporate meetings will remind you why you took that business trip in the first place.



Homelike hospitality

Each hotel room is well thought of, ready to weave a tale or share a long-lost story. The spacious air-conditioned rooms with glass windows, queen-sized beds and little things that remind you of home promise comfort and quality. Soft lighting adds to the soothing ambience.



The calm amidst the buzz

Eye-popping views to amazing food, this place is meant for those people who are looking for a bit of everything for making their evening memorable. Offering the best of fusion in its ambience, seating area, cuisines, etc., it also offers some splendid views of the city.

Come, get ready for enjoying the beauty of nature in its best form.

It's all about details

| | |
|------------------------------------|--|
| TOTAL SIZE OF LAND | 724.36 Sq. M. |
| NEAREST LANDMARK | Opposite to Axis Mall, adjacent to Novotel Hotel |
| RUNNING FRONTAGE | 53.734 M. |
| WIDTH OF ADJACENT CONNECTING ROADS | West- 33.5 M. (Street No. 184) South- 18.0M. (Street No. 171) |
| TOTAL DEVELOPED SQ. M. | 2254.92 |
| OPEN TO SKY % | 65.01 |

TYPE OF DEVELOPMENT: Assembly building comprising of-

| | |
|-----------------|---|
| GROUND FLOOR | Restaurant & Liquor Shop |
| 1ST FLOOR | Restaurant & Kitchen (along with Toilets) |
| 2ND FLOOR | Reception, Conference Room1, Conference Room 2 (Along with Toilets) |
| 3RD FLOOR | Banquet with Kitchen & toilets |
| 4TH - 6TH FLOOR | Hotel Rooms [Total-18 rooms (6 on each floor)] |
| 7TH FLOOR | Restaurant & Kitchen & toilet (along with Toilet) |
| ROOF | Terrace garden for Outdoor Dining |

| | |
|------------------------------------|------------------------------------|
| NO. OF TOWERS | 1 |
| NO. OF FLOORS | B+G+7 (height-26.45M) |
| TYPICAL FLOOR PLATE SIZE IN SQ. M. | 243.08 |
| NO. OF CAR PARKING | 21 |
| KIND OF CAR PARKING | M.L.C.P. (Multi Level Car Parking) |
| TWO WHEELER PARKING | NIL |
| CURRENT STATUS | Sanction no.: 0040018420211103 |

| | |
|--|---|
| LANDSCAPING | Only on Roof (Combination of Hard Landscape and Soft Landscape) |
| POSSESSION BY | 2023, December |
| DETAILS OF EXTERIOR FACADE FINISH | Modern Elevation Design comprising of Powdered Aluminium Louvers, Clear Toughened Glass, HPL & Textured Paint |

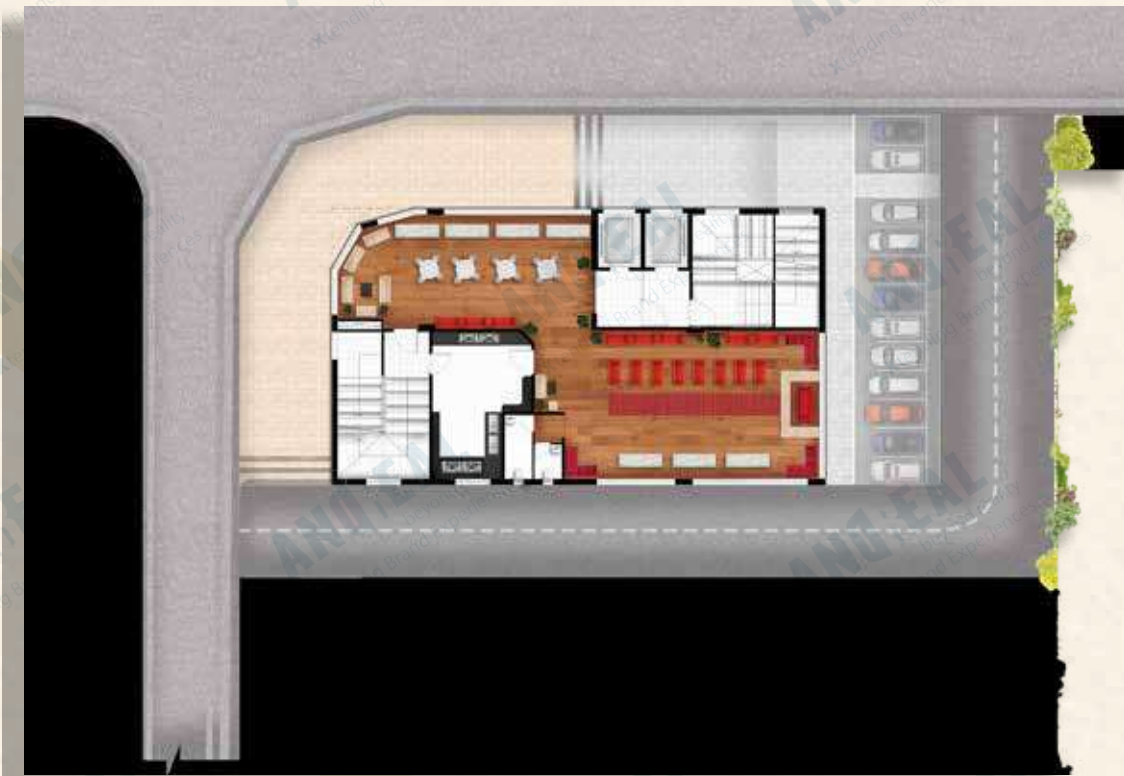
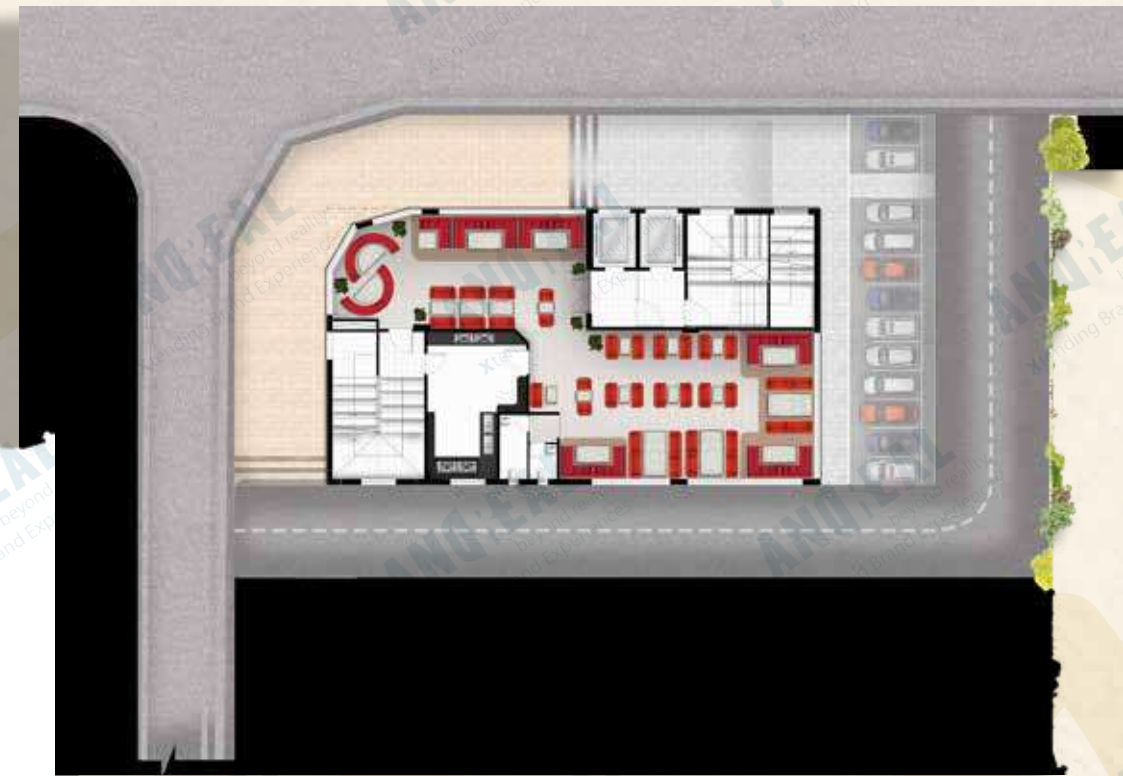
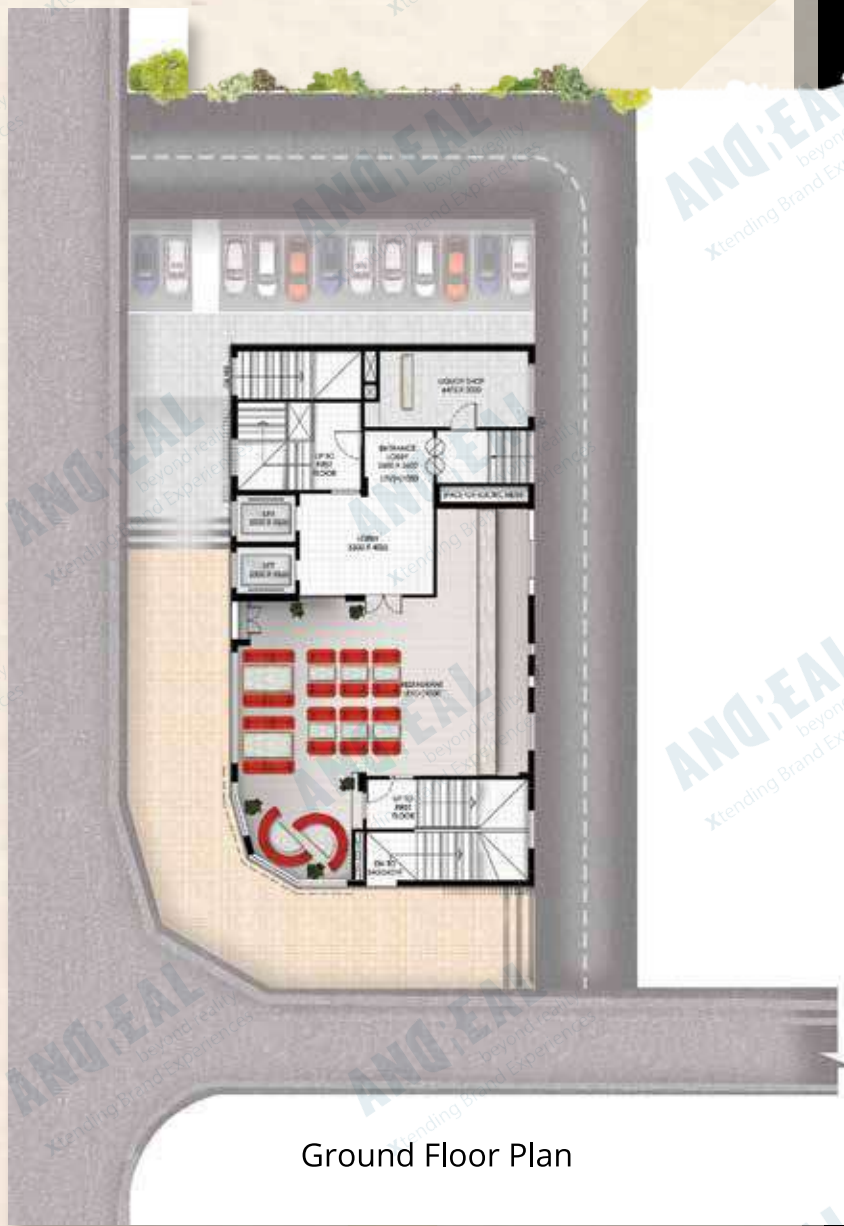
| | |
|--------------------------------|--|
| STRUCTURAL ENGINEERS | PK & Associates, Kolkata |
| ARCHITECT | Maniramka & Associates, Kolkata |
| INTERNAL SPECIFICATIONS | ~ Vitrified Tiles on all Floors ~ Centralised A/C system (VRV System) ~ The entire interior of building will be designed (Details as per design) |

AMENITIES & FACILITIES

| | |
|--|---|
| GAS BANK | Modern Elevation |
| D.G. BACKUP | Vastu compliant plan approved by reputed Vastu Consultant |
| FIRE & DOMESTIC RESERVOIR | Driveway all around the building (Roads on two side and driveway on other two) |
| RAIN WATER HARVESTING SYSTEM | Terrace garden with glass lounge |
| DOUBLE GLASS LIFT UP TO ROOF LEVEL | Well developed Entrance Lobby |
| MODERN FIRE FIGHTING SYSTEM RECOMMENDED BY W.B.F.E.S | Dedicated service staircase for different floors |
| EXTERNAL DROPPING POINT FOR CARS | |



Floor Plans





About the developer

Under the wing of Sun Asticus Group of Companies, is Naoolin Realcon Pvt. Ltd., a pioneer in the real estate industry of East India. Upholding excellent standards in terms of design, construction, pricing, quality and customer service, the company comprises reputed architects, civil engineers, interior decorators and management personnel whose dedication, devotion and efforts have helped us to carve a niche in the real estate industry of Kolkata.

From concept to execution, we offer a comprehensive service when it comes to property building. CF-13 'Nostalgia' is our first commercial property and with this we aim to reach a new height in the real estate industry.

Structural Engineers: CPK & Associates, Kolkata
Architect: Maniramka & Associates, Kolkata



Note: "All images are Virtual view, these are not be replicated in the project"

Developed by

Naolin Realcon Pvt Ltd

Merlin Tower, DN-10, Sector - V
Salt Lake City, Kolkata - 700091